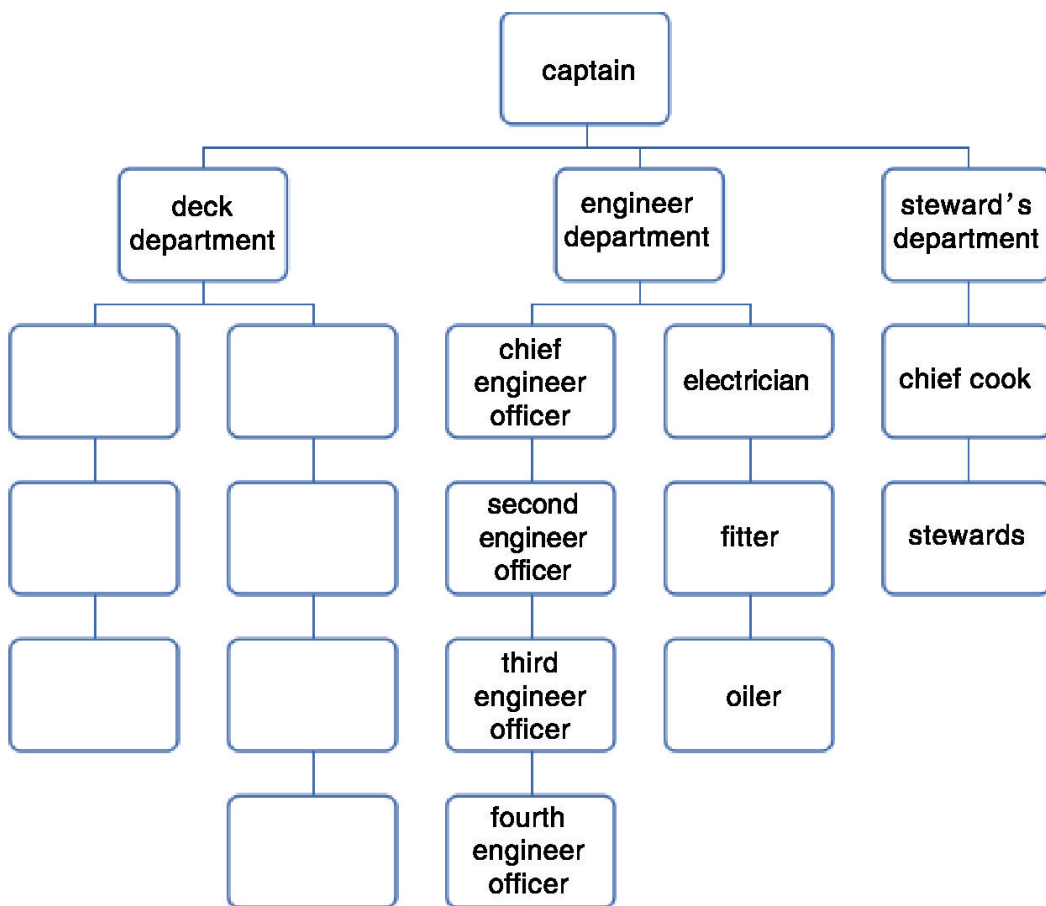


Watch MOOC 3.1.1 and 3.1.2, and Accomplish the Following Tasks

Task 1 The following is a career flow chart on a merchant vessel. Complete the information of deck department according to what you've learned.



Task 2 Choose the correct answer for each question below.

1. Who is mainly in charge of navigation, such as updating charts and making passage plans?
A. Chief officer. B. Second officer. C. Third officer. D. Bosun.
2. Who is mainly responsible for cargo loading, unloading, and stowage?
A. Chief officer. B. Second officer. C. Third officer. D. Bosun.
3. Who should take the responsibility of managing and maintaining all life-saving appliances and fire-fighting equipment?
A. Chief officer. B. Second officer. C. Third officer. D. Bosun.
4. Which of the following duties does not belong to the bosun?
A. Arrange jobs for all the ratings.
B. Carry out the maintenance of the hull, deck machinery, equipment, cargo gears, etc.
C. Look out during the navigation.
D. Take charge of the ship hygiene.

After MOOC-ing

Speaking and Thinking

Task 1 Place the duties and responsibilities under the correct positions in the table below. Examples have been given.

loading	updating chart	bridge equipment
medical duty	unloading	fire-fighting equipment
maintenance of hull	overhauling and splicing	making passage plans
deck gear operating	security appliances	working mooring lines
communication equipment	vessel hygiene	life saving appliances
log and records	working as a helmsman	painting superstructure
stowage	buffing and scaling	maintenance of cargo

Chief officer	Second officer	Third officer	Bosun	Able seaman	Ordinary Seaman
loading unloading					

Task 2 Work in groups of three. Each one chooses one position from the deck officers and one from the ratings. Introduce their duties and responsibilities to your partners. Your introduction should include:

1. Your position;
2. Your major duties and responsibilities.

The following language patterns in *Language Focus* can be useful.

Language Focus

How to introduce the responsibility?

- _____ *is/are responsible for* _____.
- _____ *is/are in charge of* _____.
- _____ *have/has the responsibility for* _____.
- _____ *take(s) charge in* _____.
- The *duties/ responsibilities* of _____ *include* _____.

Task 3 Work in pairs and role-play the situation. One of you plays the role as a crew member on YUKUN and the other as a visitor. The visitor interviews the crew member about his duties and responsibilities on the ship. Reverse roles and try again.

- A:** Welcome on board YUKUN, the training ship of Dalian Maritime University. I am the chief officer working on this ship.
- B:** Sorry, I don't quite understand what a chief officer is. Can you explain that to me?
- A:** Yes. As you can see, there are many people working on this ship. But we work in a team, which means everyone on board the ship has different job responsibilities. Take me as an example. As a chief officer, I am mainly responsible for...

After MOOC-ing

Language Focus

How to ask good questions in an interview?

What are the main responsibilities of this position?

What's your favorite part about working in this position?

What obstacles have you mainly encountered in this position?

How do you build good relationships within teams?

How was your first start at this position?

Are there opportunities for professional development? If so, what do those look like?

Task 4 Work in pairs. Ask each other the following questions.

1. How many categories can the ship crew be divided into?
2. Who is the head of the deck department?
3. Who is the head of the engineer department?
4. What are the duties and responsibilities of the chief officer?
5. What are the duties and responsibilities of the second officer?
6. What are the duties and responsibilities of the third officer?
7. What are the duties and responsibilities of the bosun?
8. What are the duties and responsibilities of the able seamen?
9. What are the duties and responsibilities of the ordinary seamen?
10. What are the duties and responsibilities of cadets?
11. Can you describe the epaulets of different crew members on board a ship?