

A Practical Course for Engineers Working on Board Ships



《轮机英语》

Marine Engineering English



江苏航运职业技术学院 轮机工程学院

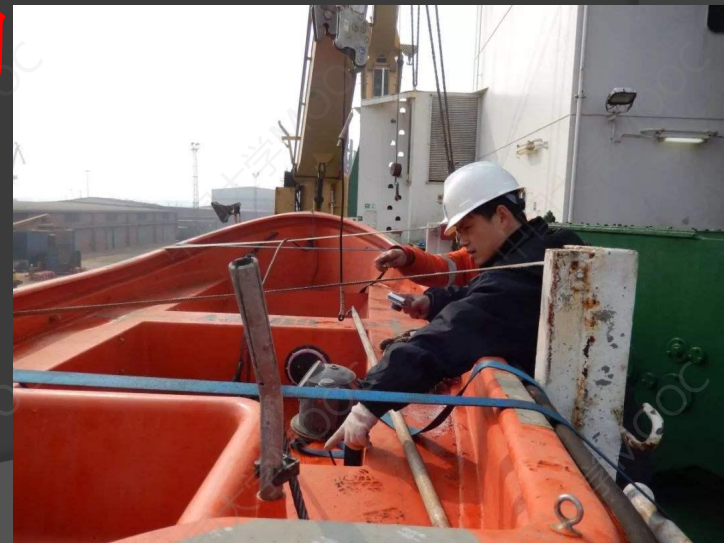
Department of Marine Engineering, Jiangsu Shipping College,

主讲：薛海龙 (Allen)

Module 4

lesson 37 SOLAS convention

SOLAS 公约



Safety First



Module 4 : Lesson 44
SOLAS convention

Exercise & Examination



Lesson 44 SOLAS Convention Exercise & Examination

The SOLAS Convention is the main international convention_____.

- A. about marine pollution prevention
- B. covering safety of life
- C. about marine
- D. about ship and port security

B

SOLAS公约是涉及人命安全的一个主要的国际公约。



Lesson 44 SOLAS Convention | Exercise & Examination

The main objective of the SOLAS Convention is_____.

- A. to provide a solution of lowering pollution at sea
- B. to specify minimum standards for the members composing the watch at sea
- C. to specify minimum standards for ships considering their safety
- D. to tell the company how to go about running their business

C

SOLAS公约的主要目的是规定船舶安全的最低标准。



Lesson 44 SOLAS Convention Exercise & Examination

The main objective of the SOLAS Convention is to specify_____ for the construction, equipment and operation of ships, compatible their safety.

- A. at most references
- B. at least references
- C. maximum standards
- D. minimum standards

D

SOLAS公约的主要目的是规定有关船舶的建造、设备和运行能符合安全性的最低标准



Lesson 44 SOLAS Convention Exercise & Examination

In China, the administration for implementing SOLAS convention is _____.

- A. the harbor bureau
- B. the government of the flag state
- C. the ship classification society
- D. ship company

B

在中国, 实施SOLAS公约的主管机关是船旗国政府。

What is the purpose of requirement for some ships to carry equipment such as EPIRBs and SARTs?

- A. To improve the possibility of ships to be rescued in an accident**
- B. To provide the information about the position of ships**
- C. To improve the technical equipment in ships**
- D. To receive the rescue information quickly**

A

要求某些船舶携带紧急无线电示位标(EPIRBs)和搜救应答器(SARTs)这样的设备,目的是提高船舶在事故中获救的可能性。EPIRBs:Emergency Position Radio Beacons; SARTs:Search and Rescue Transponder.。



Lesson 44 SOLAS Convention Exercise & Examination

The SOLAS convention prescribes that in the fire fighting drill the duty engineer should start the pump and supply deck water in _____ minute(s).

- A. 5
- B. 3
- C. 2
- D. 1

A

国际海上人命安全公约规定,消防演习时当班轮机员应在5分钟内启动消防泵并供水。



Lesson 44 SOLAS Convention Exercise & Examination

The SOLAS convention about "passenger ship and dried food ship damage control" prescribes that the engine room emergency bilge water suction should connect with_____.

- A. the main S. W pump
- B. ballast pump
- C. air-conditioning water pump
- D. the main S. W pump or ballast pump that have the biggest output

D

SOLAS公约关于“客船和干食品船的船损控制”规定：
机舱应急舱底水吸入口应与具有最大排量的主海水泵或压载水泵相连。



Lesson 44 SOLAS Convention Exercise & Examination

According to the SOLAS convention, the bilge water system_____.

- A. must connect the bilge well suction directly
- B. should not pump out the water accumulated in the cargos
- C. should not used for emergency drainage in case of ship collision
- D. should connect to the fire fighting system directly

D

按照SOLAS公约, 舱底水系统应与消防系统直接相连



Lesson 44 SOLAS Convention Exercise & Examination

The SOLAS convention prescribes that the emergency steering drill should be carried out one time every _____ months.

- A. 4
- B. 3
- C. 2
- D. 1

B

SOLAS公约规定, 应急操舵演习应每3个月进行一次。



Lesson 44 SOLAS Convention Exercise & Examination

To proceed to the assistance of a ship in distress is _____.

- A. an obligation for masters of passing by ships
- B. optional for masters of passing by ships when the weather is fine
- C. prohibited by the convention SOLAS, 1974, as amended
- D. prohibited by the convention STCW 78/95

A

进行援助遇难船舶是路过船舶的船长的义务。

SOLAS regulation require that the inert gas system shall be capable of delivering inert gas with an oxygen content of not more than what percentage?

- A. 5%**
- B. 8%**
- C. 6%**
- D. 3%**

A

SOLAS公约要求惰性气体系统能够输出含氧量不超过5%的惰性气体。



Lesson 44 SOLAS Convention Exercise & Examination

According to SOLAS, 1974, as amended, the ship owner or any person who has assumed responsibility for the ship (the "Company") must_____.

- A. establish SMS in accordance with ISM
- B. establish ISM in accordance with SMS
- C. establish ISM and SMS
- D. both B and C

A

根据修正过的1974年国际海上人命安全公约, 船东或任何对船承担责任的人必须根据ISM规则建立安全管理体系。



Lesson 44 SOLAS Convention Exercise & Examination

Main steam and exhaust pipes for winches and similar gear shall not pass through crew accommodation nor, whenever technically possible, through alleyways leading to crew accommodation; where they do pass through such alleyways, they shall be adequately_____.

- A. ventilated and tagged**
- B. ventilated and cooled down**
- C. insulated and encased**
- D. insulated and warmed up**

C

用于绞车的主蒸汽管和回汽管以及类似设备, 都不应经过船员住舱。如技术可行, 也不应经过通往船员住舱的走廊; 如果确要经过走廊, 这些管道应被足够地隔热和包裹

A Convention about safety of life at sea was adopted in 1974 which included a new amendment procedure, according which an amendment shall enter into force_____.

- A. after being accepted by more than two thirds of the Parties**
- B. after being accepted by more than half of the Parties**
- C. within a specified period of time with no objections**
- D. within a specified period of time with no exceptions**

C

1974年被批准的国际海上人命安全公约包含了一个关于新的修正程序, 根据该程序, 一个修正案在指定的时间段内没有反对就会生效。



Lesson 44 SOLAS Convention Exercise & Examination

We generally take the convention of safety of life at sea adopted in 1974 as a completely new convention, the reason is _____.

- A. it included the amendments agreed up until that date
- B. it included none of the amendments agreed up until that date
- C. it required two thirds of the Parties' acceptance for an amendment to enter into force
- D. it included a tacit acceptance procedure

D

我们通常将1974年通过的国际海上人命安全公约认为是一个全新的公约, 理由是它包含了一个默许接受程序。



Lesson 44 SOLAS Convention Exercise & Examination

The International Code for the Construction and Equipment of Ships Carrying Dangerous Chemicals in Bulk (IBC code) is a part of_____.

- A. SOLAS**
- B. MARPOL**
- C. STCW**
- D. Ballast Water Convention**

A

国际散装运输危险化学品船舶构造与设备规则是SOLAS的一部分。



Lesson 44 SOLAS Convention Exercise & Examination

The International Code for the Construction and Equipment of Ships Carrying Liquefied Gases in Bulk (IGC code) is a part of_____.

- A. SOLAS**
- B. MARPOL**
- C. STCW**
- D. Ballast Water Convention**

A

国际散装液化气体船舶构造和设备规则是SOLAS的一部分。



Lesson 44 SOLAS Convention Exercise & Examination

What is the ultimate purpose of requirements covering machinery and electrical installations?

- A. to ensure the right operation of machines**
- B. to protect equipment under emergencies**
- C. to maintain the services**
- D. to protect the safety of the ship, passengers and crew**

D

有关机器和电气设备要求的最终目的是保护船舶、乘客和船员的安全

Which of the following makes the ISM code mandatory?

- A. STCW Convention
- B. MARPOL Convention
- C. SOLAS Convention
- D. IMO Convention

C

SOLAS公约使ISM规则变成强制性的。



Lesson 44 SOLAS Convention Exercise & Examination

The minimum number and capacity of bilge pumps and fire pumps and their distributing within the ship is governed by_____.

- A. Classification Society Rules
- B. National requirements
- C. The IMO International Convention for the Safety of Life at Sea
- D. All of the above

D

船舶舱底水泵和消防泵的最少数量、排量以及布置受到船级社的规范、船旗国的要求和SOLAS公约的制约



Lesson 44 SOLAS Convention Exercise & Examination

The fire pumps must be capable of delivering a total quantity of water at a defined head, not less than _____ of the total bilge pumping capacity.

- A. one-third
- B. two-thirds
- C. one-fourth
- D. two-fourths

B

消防泵应能在一定的压头下以最大排量工作, 排量不得少于舱底泵系总容量的三分之二



Lesson 44 SOLAS Convention Exercise & Examination

An emergency bilge pumping system is provided and should be _____ of the main bilge pumping system, according to the SOLAS74 Convention.

- A. dependent
- B. independent
- C. in series
- D. in parallel

B

SOLAS公约规定, 应急舱底水泵系应配备且与主舱底水泵系独立。



Lesson 44 SOLAS Convention Exercise & Examination

According to the SOLAS convention, the engine room emergency bilge water suction should connect with_____.

- A. the main SW pump**
- B. the ballast pump**
- C. the air conditioning water pump**
- D. the main SW pump or ballast pump that have the biggest output**

D

根据SOLAS公约, 机舱应急舱底水吸入口应与具有最大排量的主海水泵或压载水泵相连。

ISM code has applied to the ships as follows except_____.

- A. High-speed craft of 500 gross tons or more**
- B. Passenger ships**
- C. Bulk freight vessels of 500 gross tons or more**
- D. Warship of 500 gross tons or more**

D

ISM规则不适用于500总吨及以上的军舰。



Lesson 44 SOLAS Convention Exercise & Examination

Which of the following is issued to a vessel under the requirement of ISM Code?

- A. DOC
- B. ORB
- C. SMC
- D. SMS

C

安全管理证书(Safety management certificate)是按照ISM规则要求由主管机关签发给船舶的。